



Stellar Phoenix Windows Data Recovery

Version 4.1

Installation Guide

Table of Contents

Overview	1
Getting Started	3
Installation Procedure	4
Order and Register	6
How to Order.....	7
How to Register	8
Starting the Software.....	15
User Interface	16
Configuring Settings.....	17
Stellar Phoenix Update Wizard	18
Using the Software.....	20
Legal Notices.....	22
Copyright.....	23
Disclaimer.....	24
License Agreement.....	25
Trademarks	27
Technical Support.....	28
Support Helpline	28
Online Help.....	28
About Stellar	30



Overview

Stellar Phoenix Windows Data Recovery is a complete solution to recover data from hard disk. However, Microsoft Windows Operating Systems (OSs) should be installed on hard disk to recover data by using Windows Data Recovery. It recovers data from hard disk and logical volumes of hard disk. It provides recovery of data from deleted or formatted volumes. Data that is deleted from volumes can also be recovered by using this software. In addition, you can search volumes that were created earlier and formatted to create new volumes. Data can be recovered from these volumes too.

It allows you to resume recovery at any time by using image (.img) file. Two types of image file can be used - scan information file and image of hard disk or volume.

Another feature that is available in this software is email recovery. Email supported by Microsoft Outlook and Microsoft Outlook Express email programs can be recovered by using Windows Data Recovery.

You can view status of hard disk and create image of hard disk. Also, image of volumes can also be created by using this software. Images can serve as backup media, since, you can save images and can recover data from them at any time. In addition, you can also create an exact replica of hard disk by using cloning feature of Windows Data Recovery.

Raw recovery feature of this software allows you to recover data from an entire hard disk and volumes. You can add file types such that required files should be found after scanning.

Key Features of Windows Data Recovery:

- Recovery of deleted data
- Recovery of data from formatted volumes
- Recovery of data from volumes that are no longer exist in hard disk
- Recovery of data from Compact Disc (CD) and Digital Versatile Disc (DVD)
- Recovery of data from removable media such as pen drive
- Restart recovery at any time
- Recovery of email, which are supported by Microsoft Outlook and Microsoft Outlook Express
- Cloning of hard disk

- Image creation of hard disk or volume, in addition, image of selected region of hard disk or volume
- Statistics of hard disk



[Previous](#) [Next](#)

Getting Started

Windows Data Recovery provides you different options for recovering data. You can recover email supported by Microsoft Outlook and Microsoft Outlook Express email program.

In addition, you can view the status of hard disk and recover data from selected region of hard disk. You can create image of volumes and hard disk. You can also make an exact copy of hard disk.

- [Installation Procedure](#)
- [Order and Register](#)
- [Starting the software](#)
- [User Interface](#)



Installation Procedure

Before installing the software, ensure that your system meets the minimum system requirements:

- **Minimum System Requirements**

Processor: Pentium Class

RAM: 128 MB minimum

Hard Disk: 35 MB

Operating Systems (OSs): Windows 2000/2003/XP/Vista

To install the software:

1. Double-click **StellarPhoenixWindowsDataRecovery-Setup4.1.exe** file to start the setup process. The Setup - Stellar Phoenix Windows Data Recovery dialog box opens. Click **Next**.
2. In the License Agreement screen, select **I accept the agreement** option. The Next button will be enabled. Click **Next**.
3. In the Select Additional Tasks screen, check the required check boxes. Click **Next**.
4. In the Select Destination Location screen, provide the path by using Browse button where the setup files will be stored. Click **Next**.
5. In the Start Menu Folder screen, provide the path by using Browse button where the program's shortcuts will be stored. Click **Next**.
6. In the Ready to Install screen, review the settings. Click **Back** to change settings. After confirming the settings click **Install**. The Installing screen shows the installation process.
7. After completing the process, the Completing the Stellar Phoenix Windows Data Recovery Setup Wizard screen opens. Click **Finish**.



Note: You can clear the Launch Stellar Phoenix Windows Data Recovery

check box to stop the automatic launch of the software.



[Previous](#) [Next](#)

Order and Register

To know how to order and register:

- [How to Order?](#)
- [How to Register?](#)



Stellar Phoenix Windows Data Recovery

How to Order

The software can be purchased by making payments online using a credit card. Please visit www.stellarinfo.com/disk-recovery-prices-fat-nt for more information and to place an order.

Alternatively, if the demo version is installed then you can register the demo version. To register the demo version click **Help** and select **Order Stellar Phoenix Windows Data Recovery** to start the registration process.


Once the payment is complete, an activation serial number along with activation details is sent through email. This activation serial number is required to register the software.



How to Register



Notes:

- If the software is downloaded from www.stellarinfo.com/disk-recovery-prices-fat-nt (i.e., ESD version), for the full functionality, the product must be activated using Serial Number (received through email after purchasing the product).
 - If the software is installed using the product installation CD (i.e., BOX version), hardware lock[] is mandatory for the functioning of the software which is available with the software kit.
-

To register the software:

- **Over Internet**

The product can be registered over the Internet after purchasing the serial number.

To register the software:

1. On the Menubar, click **Activation** and click **Activate Online** . The Stellar Phoenix Windows Data Recovery dialog box opens.
 2. Click **Yes**. The software checks for the Internet connection. After successful connection, software registration wizard will appear. Click **Next**.
-



Note: If Internet connection is unavailable, user can also register the software by sending email. For more information click [here](#).

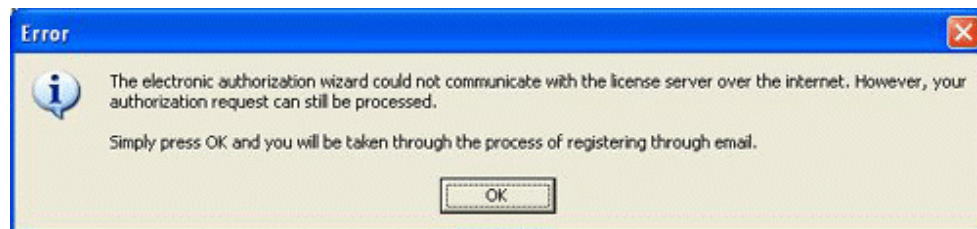
3. Click **Next**. Type the Serial number (received through email after purchasing the product) in the Serial number text box.
-



4. Click **Next**. The software would automatically communicate with registration server and would register the software. Click **Finish** to complete the registration process.

- **Using Email**

If the software could not communicate with the server, while registering the software over Internet, an error message pops up. Click **OK**, for registering through email.



To register by using email:

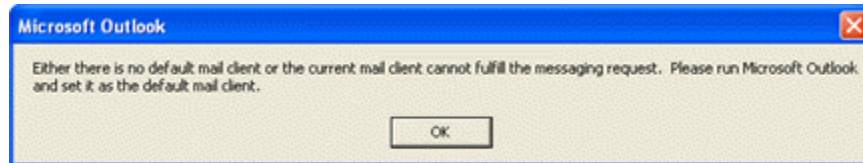
1. The registration wizard for sending the authorization request opens.



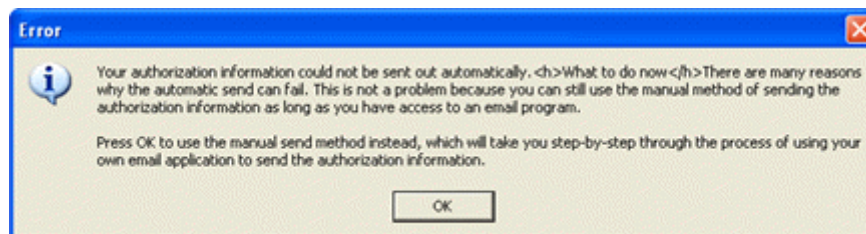
2. Leave the Manually send email checkbox option unchecked and click **Next**. Type the e-mail address in the text box to which the unlocking code has to be sent. Click **Next**.



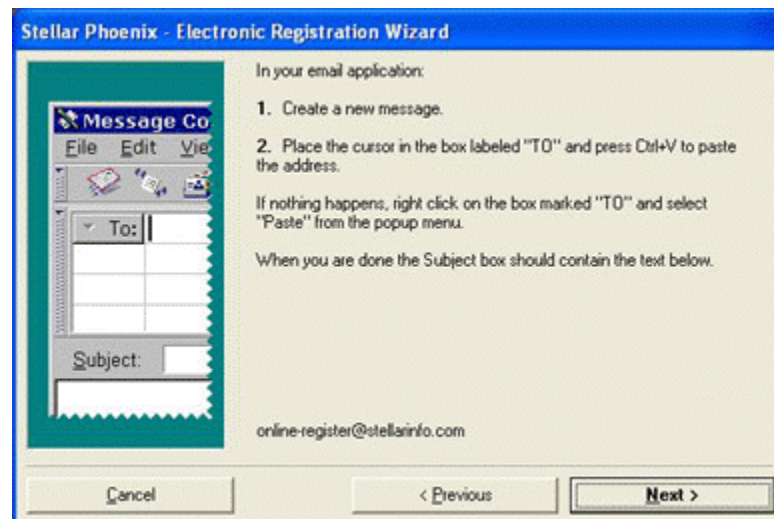
3. The email address verification window appears. Click **Yes**, if email address is correct. The software automatically launches the default email client, and sends an email containing the unique site code with registration request to the registration server. If the registration wizard could not launch the default email client, following messages appear.



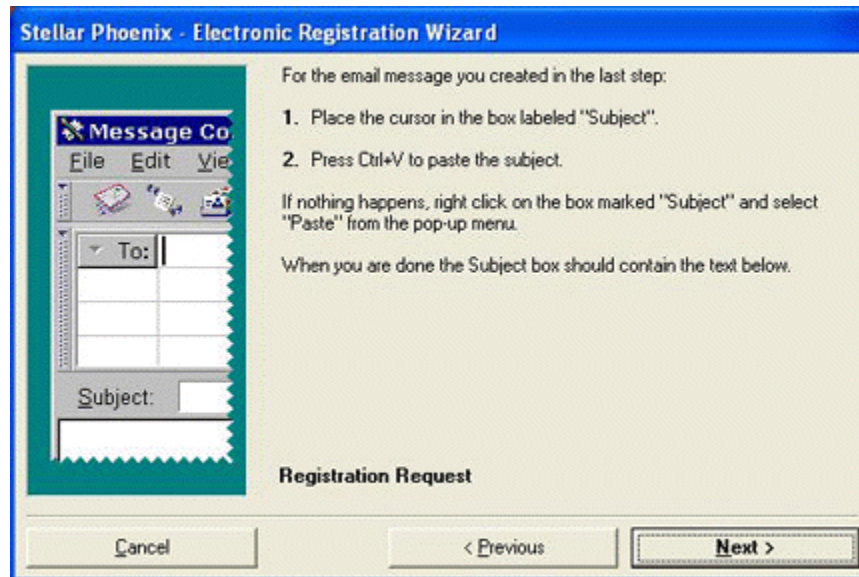
4. Click **OK**. The Error dialog box opens. Click **OK** to start the process manually.



5. The window shown below appears.

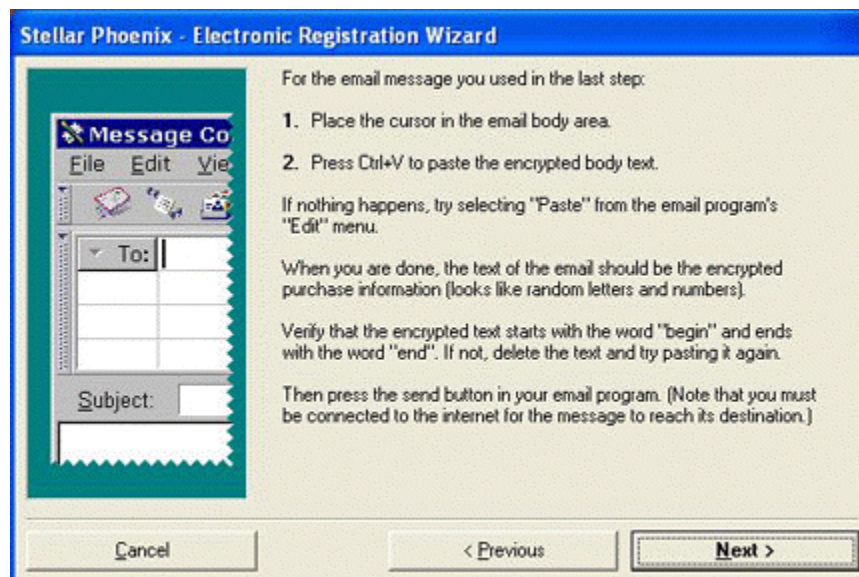


6. Open the email client such as, Outlook Express, MS outlook, Eudora and create a new message. Place the cursor in the box labeled To and press **CTRL+V** to paste address. If it does not work, right-click on the **To** box and select **Paste** from the popup menu. The To box will contain the address. Click **Next**.



7. Place the cursor in the box labeled Subject in the same message window and paste (method same as above) the text. The Subject box will contain the text.

8. Click **Next**, do the same process as mentioned to paste the encrypted text content in the body of the message.

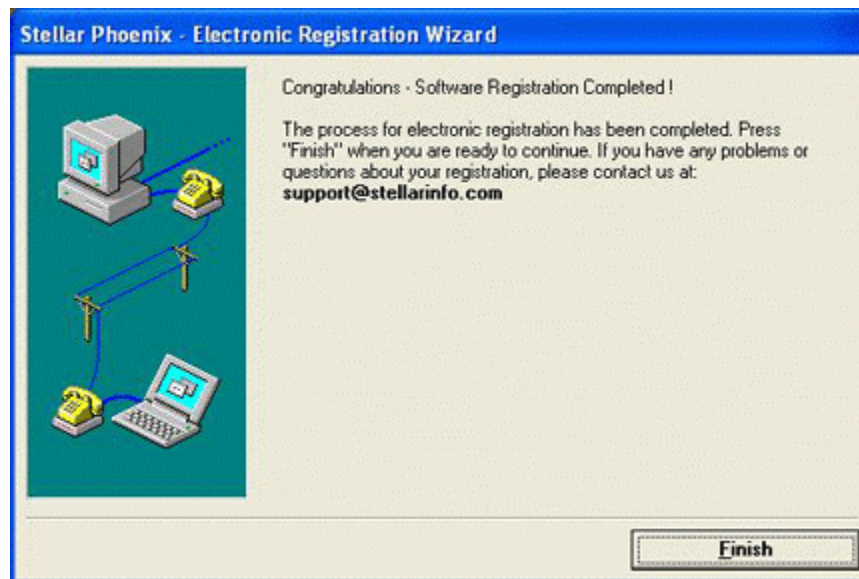


9. Click **Next** to finish the procedure and send the email.



Note: Ensure that the content of the email sent for automatic authorization have the details as mentioned above. If they are incorrect, the server will reject the mail registration request.

10. If the process is successful, following window will appear.



After processing the email, registration server would send an email containing unlocking code/site-key.

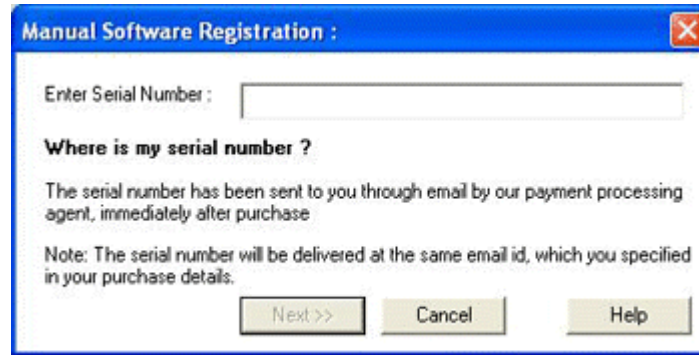


Note: In case wizard is not able to launch the default email client, it automatically shifts to the manual process for sending the activation authorization request.

- **Without Internet**

To register without Internet connection:

1. If the software is registered without Internet connection, following window pops up. Enter the Serial Number (received through email) and click **Next**.



2. Click **Finished** to complete the manual registration.

Manual registration is complete, software would create a PHX_REG.txt file on the desktop. This file has to be mailed to register@stellarinfo.com. After verifying the details, the unlocking code/site key is sent through email.

To register the software manually (after receiving the site-key):

3. Click **Activation** and select **Manual Registration** in the Menubar.
4. Type the Site Key and click **Validate** to register the software.



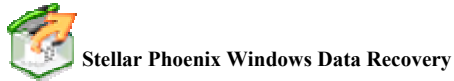
Note: All Manual registration process will take maximum of one business day for completion.



Starting the Software

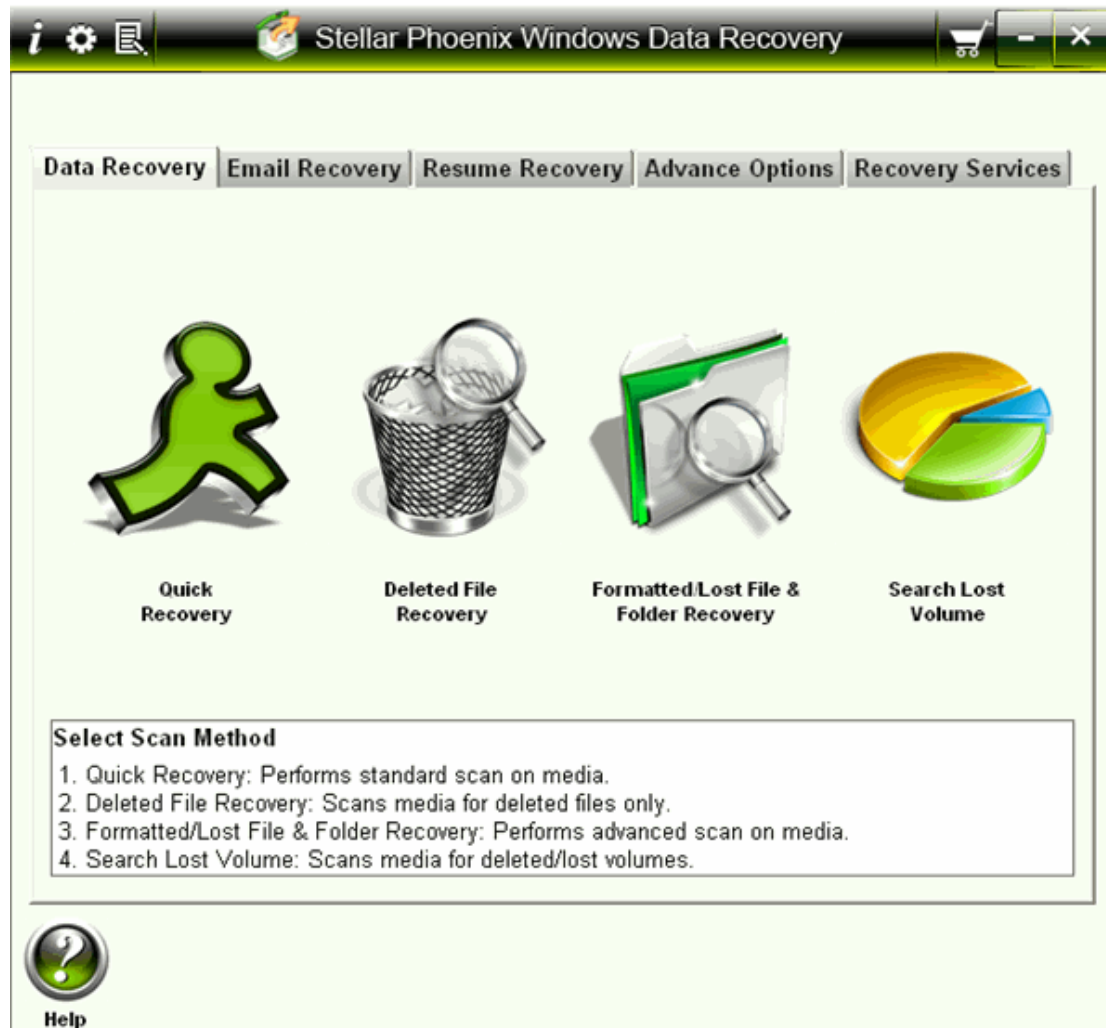
To start the software, do one of the following:

- Click **Start**, point to **All Programs**, select **Stellar Phoenix Windows Data Recovery**, and then click **Stellar Phoenix Windows Data Recovery**.
- Double-click the shortcut icon of **Stellar Phoenix Windows Data Recovery** on the desktop.
- Click quick launch icon of **Stellar Phoenix Windows Data Recovery** on the taskbar.



User Interface

Stellar Phoenix Windows Data Recovery software's main user interface is as shown below.







Configuring Settings

You can change general settings of the Windows Data Recovery Software.

To configure Windows Data Recovery:

- Open Windows Data Recovery. Click . Under General Settings tab, configure general options:
 - **Disk Temperature:** select either Fahrenheit or Celsius. The disk temperature will be shown in the selected unit when you view the [drive Status](#).
 - **Show 'Tip of the Day' checkbox:** check this checkbox to view tip at software startup
 - **Check for 'Latest Updates' at startup:** check this checkbox to receive latest updates for the software. You can also click  to launch Stellar Phoenix update wizard. This wizard automatically detects new updates available for the software and download available updates.
 - **Log Settings:** check the **Save log before closing application** checkbox to automatically save log of processes. Click **Browse** to specify the destination where log files should be saved.
 - **Scan Settings:** Use arrows to increase or decrease the number of read attempts. Scanning process will try to scan the hard disk up to the number of attempts specified in this box.
 - **Language:** Click **Set interface language** listbox to set the language of software.
- Click **Add File Types** tab to [add](#), [remove](#), or [edit](#) file type. This will become the default settings. However, you can change file types settings as per your requirement during raw recovery.
- You can also activate Stellar Phoenix Windows Data Recovery by clicking the **Manual Activation** tab.



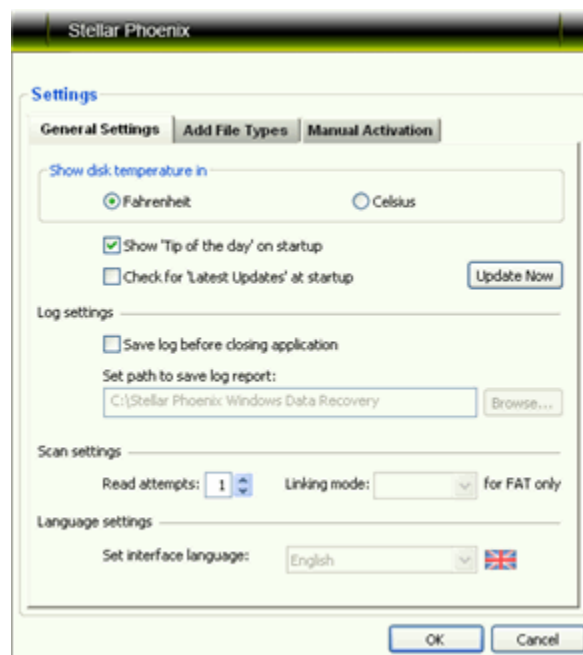
Stellar Phoenix Windows Data Recovery

Stellar Phoenix Update Wizard

The Stellar Phoenix Update Wizard keep your Stellar Phoenix applications updated. Update option in the application is capable of checking the latest updates. This will check for both latest minor and major version available online. You can easily download minor version through the update wizard. However, the major version available has to be purchased. While updating the software, it's recommended to close all the running programs.

To start Stellar Phoenix Update Wizard:

1. In the Stellar Phoenix Windows Data Recovery main screen, Click  icon. Under General Settings tab, click  button.



2. Stellar Phoenix Update Wizard window pops up. Click **Next** to proceed.
3. The wizard will start searching for the latest updates and if it finds any new version, a window pops up indicating the availability.
4. Click **Next**, the software will start downloading the update files from the server. When the process is complete, the software will upgrade to the latest version.

Live Update may not happen due to following reasons:

- Internet connection failure
- Updates are not available
- Unable to download configuration files
- Unable to locate updated files or version
- Unable to locate executable file

Note:

If major version is available, to upgrade the software you have to purchase it.



Using the Software

Stellar Phoenix Windows Data Recovery software recovers data from hard disk, CD/DVD, or removable media. This software can recover data from deleted, corrupted or lost volume.

You can recover email supported by Microsoft Outlook and Microsoft Outlook Express by using this software. In addition, image of hard disk and volumes can also be created by using this software. Cloning is another feature that is available in Windows Data Recovery. To learn more, view:

- **Recovering Data**

Windows Data Recovery provides you different options to recover your data. Quick Recovery, Deleted File Recovery, Formatted/Lost File and Folder Recovery, and Search Lost Volume are the four recovery methods available in this software. All methods are different as they apply different scanning process.

Quick recovery performs a quick scan on selected volume. This option's scanning process is fast. You will find almost all data by using this option.

Deleted File Recovery provides two scanning options - quick and deep scan. Quick scan is fast whereas deep scan is slow. However, deep scan is more efficient in finding data. Also, this scan process finds only data that has been deleted from volumes.

Formatted/Lost File and Folder Recovery finds data that is lost due to formatting a volume. In addition, you can scan volumes either as FAT or NTFS partition.

You can also recover data from volumes that are deleted from hard disk. Search Lost Volume recovery method finds all volume that has been deleted from hard disk. You can perform Quick Recovery, Deleted File Recovery or Formatted/Lost File recovery on retrieved volumes.

- **Resuming Recovery**

Resume recovery allows you to restart recovery by using either

- [Scan information file](#)
- [Image file](#)

Both, the scan information file and image of a drive are saved as an image file (.img). You can use an image file to restart recovery at any time.

You should save scan information file and image file of a drive at different locations with proper naming such that you can easily retrieve the required file for restarting recovery.

- **Recovering Email**

Email Recovery option of Windows Data Recovery allows you to recover email supported by Microsoft Outlook and Microsoft Outlook Express email programs. Microsoft Outlook saves all email in a .pst file. You will need to specify .pst file to recover email supported by Microsoft Outlook. Microsoft Outlook Express saves email in .dbx file. You will need to specify .dbx file to recover email supported by Microsoft Outlook Express.

In addition, you can save email supported by Microsoft Outlook as .eml files by using Windows Data Recovery. You can open .eml file in Microsoft Outlook Express.

- **Cloning and Image**

Windows Data Recovery allows you to create image of a hard disk or volume and create an exact copy of a hard disk. You can use Advance Drive Options of Windows Data Recovery to create image and clone a hard disk. An image of a hard disk or volume is saved as .img file. You can use this .img file to restart recovery at any time.

You can create image of an entire hard disk or volume or of selected region of a hard disk or volume. You can clone a hard disk but you cannot clone a logical volume.

- **Performing raw recovery**

Raw recovery allows you to recover data from hard disk, CD, DVD, pen drive or volumes of a hard disk. This recovery option recovers everything that is found in the selected source. You can select an source or define region for scanning process. However, you cannot select region from a volume while performing raw recovery on the volume.

A long list of file type is provided in the raw recovery file type option. You can also add file type, if the required file type is not listed in the file type list.

- **Drive Status**

The drive status option of Windows Data Recovery shows information of the attached hard disk. The Drive Status box displays model number, serial number, size, temperature, status, S.M.A.R.T feature and firmware revision number of attached hard disk. In addition, S.M.A.R.T information are also listed in the S.M.A.R.T information box.

The Drive Information box shows information such as total sectors, sectors per track, number of cylinders and number of heads. The volume Information box shows information of existing logical volumes in the hard disk.



Stellar Phoenix Windows Data Recovery

Legal Notices

[Copyright](#)

[Disclaimer](#)

[Trademarks](#)

[License Agreement](#)



Copyright

Stellar Phoenix Windows Data Recovery software, accompanied user manual and documentation are copyright of Stellar Information Systems Ltd., with all rights reserved. Under the copyright laws, this user manual cannot be reproduced in any form without the prior written permission of Stellar Information Systems Ltd. No Patent Liability is assumed, however, with respect to the use of the information contained herein.

Copyright © 1995-2009 by Stellar Information Systems Ltd. INDIA



Disclaimer

The Information contained in this manual, including but not limited to any product specifications, is subject to change without notice.

STELLAR INFORMATION SYSTEMS LTD PROVIDES NO WARRANTY WITH REGARD TO THIS MANUAL OR ANY OTHER INFORMATION CONTAINED HEREIN AND HEREBY EXPRESSLY DISCLAIMS ANY IMPLIED WARRANTIES OF MERCHANTABILITY OR FITNESS FOR ANY PARTICULAR PURPOSE WITH REGARD TO ANY OF THE FOREGOING STELLAR INFORMATION SYSTEMS LTD ASSUMES NO LIABILITY FOR ANY DAMAGES INCURRED DIRECTLY OR INDIRECTLY FROM ANY TECHNICAL OR TYPOGRAPHICAL ERRORS OR OMISSIONS CONTAINED HEREIN OR FOR DISCREPANCIES BETWEEN THE PRODUCT AND THE MANUAL. IN NO EVENT SHALL STELLAR INFORMATION SYSTEMS LTD, BE LIABLE FOR ANY INCIDENTAL, CONSEQUENTIAL SPECIAL, OR EXEMPLARY DAMAGES, WHETHER BASED ON TORT, CONTRACT OR OTHERWISE, ARISING OUT OF OR IN CONNECTION WITH THIS MANUAL OR ANY OTHER INFORMATION CONTAINED HEREIN OR THE USE THEREOF.



Stellar Phoenix Windows Data Recovery

License Agreement

Stellar Phoenix Windows Data Recovery

Copyright © 1995-2009 by Stellar Information Systems Ltd. INDIA

www.stellarinfo.com

All rights reserved.

All product names mentioned herein are the trademarks of their respective owners.

This license applies to the standard-licensed version of Stellar Phoenix Windows Data Recovery.

Your Agreement to this License

You should carefully read the following terms and conditions before using, installing or distributing this software, unless you have a different license agreement signed by Stellar Information Systems Ltd.

If you do not agree to all of the terms and conditions of this License then do not copy, install, distribute or use any copy of Stellar Phoenix Windows Data Recovery with which this License is included, you may return the complete package unused without requesting an activation key within 30 days after purchase for a full refund of your payment.

The terms and conditions of this License describe the permitted use and users of each Licensed Copy of Stellar Phoenix Windows Data Recovery. For purposes of this License, if you have a valid single-user license, you have the right to use a single Licensed Copy of Stellar Phoenix Windows Data Recovery. If you or your organization has a valid multi-user license, then you or your organization has the right to use up to a number of Licensed Copies of Stellar Phoenix Windows Data Recovery equal to the number of copies indicated in the documents issued by Stellar when granting the license.

Scope of License

Each Licensed Copy of Stellar Phoenix Windows Data Recovery may either be used by a single person or used non-simultaneously by multiple people who use the software personally installed on a single workstation. This is not a concurrent use license.

All rights of any kind in Stellar Phoenix Windows Data Recovery, which are not expressly granted in this license, are entirely and exclusively reserved to and by Stellar Information Systems Ltd. You may not rent, lease, modify, translate, reverse engineer, decompile, disassemble or create derivative works based on Stellar Phoenix Windows Data Recovery nor permit anyone else to do so. You may not make access to Stellar Phoenix Windows Data

Recovery available to others in connection with a service bureau, application service provider or similar business nor permit anyone else to do so.

Warranty Disclaimers and Liability Limitations.

Stellar Phoenix Windows Data Recovery and all accompanying software, files, data and materials are distributed and provided AS IS and with no warranties of any kind, whether expressed or implied. In particular, there is no warranty for the quality of data recovered. You acknowledge that good data processing procedure dictates that any program including Stellar Phoenix Windows Data Recovery must be thoroughly tested with non-critical data before there is any reliance on it and you hereby assume the entire risk of all use of the copies of Stellar Phoenix Windows Data Recovery covered by this License. This disclaimer of warranty constitutes an essential part of this License.

In addition, in no event does Stellar authorize you or anyone else to use Stellar Phoenix Windows Data Recovery in applications or systems where its failure to perform can reasonably be expected to result in a significant physical injury or in loss of life. Any such use is entirely at your own risk and you agree to hold Stellar harmless from any and all claims or losses relating to such unauthorized use.

General

This License is the complete statement of the agreement between the parties on the subject matter and merges and supersedes all other or prior understandings, purchase orders, agreements and arrangements. This License shall be governed by the laws of the State of Delhi, India. Exclusive jurisdiction and venue for all matters relating to this License shall be in courts and for a located in the State of Delhi, India and you consent to such jurisdiction and venue. There are no third party beneficiaries of any promises, obligations or representations made by Stellar herein. Any waiver by Stellar of any violation of this License by you shall not constitute nor contribute to a waiver by Stellar of any other or future violation of the same provision or any other provision of this License.

Copyright ©1995-2009 by Stellar Information Systems Ltd. All rights reserved.



Stellar Phoenix Windows Data Recovery

Trademarks

Stellar Phoenix Windows Data Recovery® is a registered trademark of Stellar Information Systems Ltd.

Windows 2000 Server®, Windows XP®, Windows 2003® and Windows Vista® are registered trademarks of Microsoft® Corporation Inc.

All Trademarks Acknowledged.

All other brands and product names are trademarks or registered trademarks of their respective companies.



Technical Support

Our Technical Support professionals will give solutions for all your queries related to Stellar Products.

You can either Call Us or Go Online to our support section
<http://stellarinfo.com/esupport/users/kb.php>

Support Helpline

Monday to Friday [24 Hrs. a day]

USA (Toll free - Pre Sales Queries)	1-866-554-2512
USA (Post Sales Queries)	1-315-220-6245
UK (Europe)	+44-207-993-2293
Germany	+49-180-110-105-0051
Worldwide	+91-921-395-5509
Skype Id	stellarsupport
Email Orders	orders@stellarinfo.com

Online Help

- [Chat Live](#) with an Online technician
-

- Search in our extensive [Knowledge Base](#)
- [Submit Ticket](#) (If our Knowledge Base does not answer your question)
- Login and view [Ticket Status](#) (If you already have a valid Ticket with you)
- [Download Documents](#) on Product Usage (For Registered members only, i.e, user with login ID. If you are an unregistered user, please visit <http://stellarinfo.com/esupport/users/login.php> to create login ID)



About Stellar

Stellar Information Systems Ltd. is a trusted name in the field of Data Recovery and Data Protection Software for more than a decade.

We provide the widest range of Data Recovery Products. Our range includes Data Recovery Software for almost all Operating Systems and File Systems.

Product line:

Data Recovery

A widest range of data recovery software that helps you recover your valued data lost after accidental format, virus problems, software malfunction, file/directory deletion, or even sabotage!. [More Info >>](#)

File Recovery

The most comprehensive range of file undelete and unerase software for Windows and MS office repair tools. [More Info >>](#)

Email Recovery

A wide range of mail recovery, mail repair and mail conversion applications for MS Outlook, MS Outlook Express and MS Exchange useful in instances of data loss due to damages and corruption of Email. [More Info >>](#)

Data Protection

A wide range of Prevent Data Loss, Data backup and Hard Drive Monitoring Applications to ensure complete data protection against hard drive crash. [More Info >>](#)

Data Sanitization

Data cleanup and file eraser utility can delete selected folders, groups of files, entire logical drives, System Traces & Internet traces. Once the data have been removed using Stellar Wipe - Data File eraser utility, it is beyond recovery limits of any Data Recovery Software or utility. [More Info >>](#)

For more information about us, please visit www.stellarinfo.com
